

PRODUCT DATA SHEET

F075-3S4 - 3" MECHANICAL FLOW METER WITH HEAVY DUTY MECHANICAL DISPLAY

The M Series 3" MECHANICAL FLOW METER are suitable for flows between 20 – 733 L/min (5.28 - 193.64 GPM), providing highly accurate flow measurement performance. The M Series offers $\pm 1.00\%$ accuracy of true reading in a compact footprint, requiring no flow conditioning and with high pressure and temperature capabilities.

Key features include:

- Cast Aluminium construction
- FKM (Viton) seals
- Maximum flow rate 733 L/min / 193.64 GPM
- Accuracy of $\pm 1.00\%$ of reading
- Exceptional repeatability of $\pm 0.03\%$
- Temperature up to 120 °C / 248 °F
- 1 point factory calibration as standard, with additional points upon request

SPECIFICATIONS



F075-3S4

		F075-3S4		
Material of construction	Meter Body	Cast Aluminium		
	Rotor	Aluminium (6061)		
	Seals	FKM (Viton)		
Design Specifications		3" NPT Thread [w/ litres mech display]		
Process Connections		3" NPT Thread [w/ litres mech display]		
Technical Specifications		min	max	
	Flow rate < 5cPr	60	600	L/min
		15.85	158.50	GPM
	> 5cP	20	733	L/min
		5.28	193.64	GPM
	Non lubricating fluids	-	733	L/min
		-	193.64	GPM
Operating Temperature Range**		-40	120	°C
		-40	248	°F
	Accuracy ($\pm\%$)	1.00%		
	Repeatability ($\pm\%$)	0.03%		
	Nominal K-Factor	- Pulses/Litre - Pulses/Gallon		

OUTPUT TYPE



HEAVY DUTY MECHANICAL DISPLAY

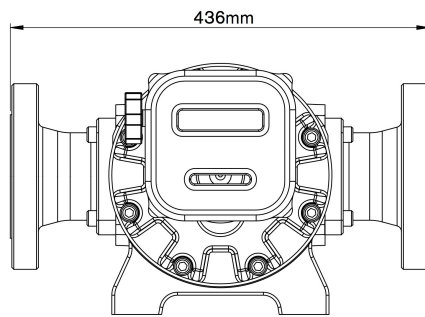
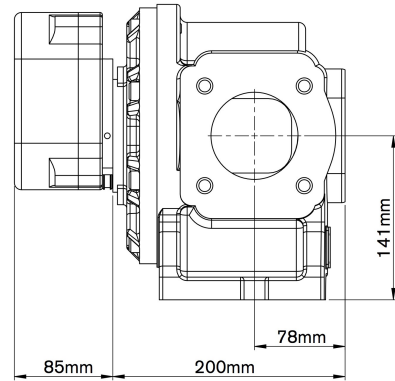
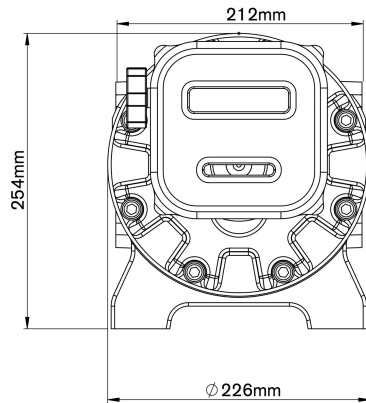
		Heavy Duty Mechanical	
Construction	Aluminium		
IP Rating	IP67		
Temp	Min: - Max: - °C		
	Min: - Max: - °F		
EX Approvals	-	Please refer to instruction manual and certification documentation for product appropriate certification information	
Display		17mm/6mm	
Digit size (upper/lower)		✓	
Accumulated total		✓	
Resettable total		✓	
Preset total		✗	
Flow rate		✗	
Outputs			
4-20 mA (passive)		✗	
Pulse/Transistor Output		✗	
Flow Alarm		✗	
Batch Control output		✗	



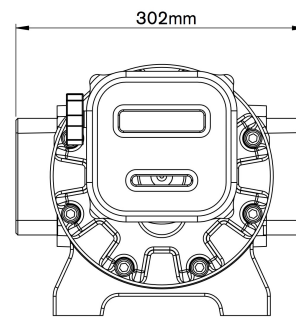
macnaught

PRODUCT DATA SHEET

F075-1S4
S075-1S4



ANSI/DIN/JIS



G/NPT