

Atmos[®] Wide range gas meters



Two-pipe wide-range diaphragm gas meter WG2.5S

The meter is characterized by precise measurements, a constant measuring stability, a long life and high reliability. Thanks to the use of high-grade materials the diaphragm gas meter is resistant to corrosion.

The gas meter is suitable for various gas media. The integrated calibration system coordinates the movement of the valves in relation to the optimum gas flow. The excellent linearity of the error curve is guaranteed even at low flow rates.

Due to the optimum rotating characteristics of the valves the Q_{\min} value remains stable and the gas meter is resistant to contamination. The high measuring range enables precise metering results. The Atmos[®] diaphragm gas meter meets the requirements of the EN1359:1998/A1:2006 and OIML R137-1 (2012).

Performance characteristics

- Approved in accordance with MID by NMI
- Wide measuring range for flow rates of 0.016 m³/h to 6 m³/h
- Galvanized steel powder-coated housing for maximum corrosion resistance
- Fire resistant (HTB) up to 0.1 bar according to EN1359
- Max pressure loss: < 200 Pa at flowrate of 6 m³/h
- Starting flow < 1 dm³/h
- Integrated system to adjust the error curve
- Working temperature range: -25 °C to +55 °C
- Operating pressure: 0.5 bar
- Long-term stability due to usage of high-quality diaphragms
- Retrofittable with pulser
- Optional: reverse flow preventer

Size:

WG2.5S 0.016 m³/h to 6 m³/h

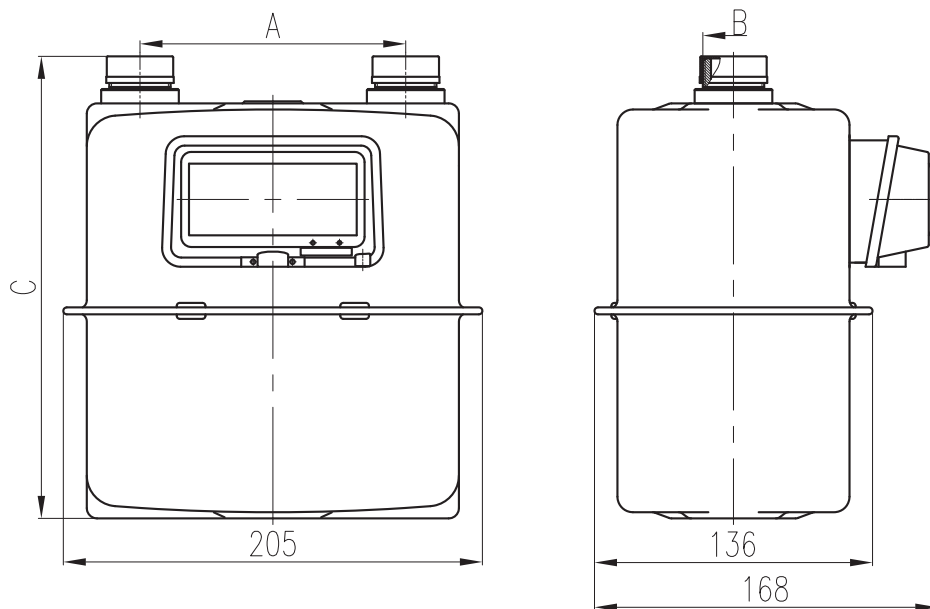
Gas media:

- Natural gas
- Town gas
- Liquid gas
- Methane gas

Housing material:

Galvanized steel sheet or die-cast aluminum

Technical data Atmos® WG2.5S			
Type			WG2.5S
Nominal flowrate	Q_n	m³/h	2.5
Maximum flowrate	Q_{max}	m³/h	6
Minimum flowrate	Q_{min}	m³/h	0.016
Maximum operating pressure		bar	0.5
Maximum permissible errors	$Q_t \leq Q \leq 0.1 Q_{max}$ $Q_{min} \leq Q < Q_t$		± 1.5% ± 3%
Max. pressure loss		mbar	≤ 2
Display range max.		m³/h	99999.9998
Display range min.		m³/h	0.0002
Accuracy class	class		1.5
Cyclic volume		dm³	1.2
Pulse value		m³/pulse	0.01
Weight		kg	1.8



Dimensions Diaphragm gas meter Atmos® WG 2.5S							
A	[mm]	90 ± 0.50	110 ± 0.50	130 ± 0.50			
B		M30 x 2 - 6 g	G¾B	G¾B	G1B	NPT ¾"	BS746 1"
C	[mm]	226		218			